

David Pearson

Executive Director, Don Dunstan Foundation



- Reminder of what we are trying to do
- Update on the Adelaide Zero Project
- Next Steps



We're trying to solve a problem...

Flinders Street homeless: Violent confrontations as police clear rough sleepers in Melbourne

Updated 1 Feb 2017, 11:29pm



00:59 01:04

VIDEO: Scuffle breaks out and crowds boo as police escort two protestors from Flinders Street Station. (ABC News)

Violence that broke out when authorities moved a group of homeless people from outside Flinders Street Station was caused not by the homeless, but by protesters, police say.

RELATED STORY: [Homeless in Melbourne's CBD to be given immediate housing](#)

MAP: [Melbourne 3000](#)

Bergen County first in nation to end chronic homelessness

2

Posted on March 28, 2017 at 2:57 PM



Bergen County Executive Jim Tedesco announced that the county had become the first place in the nation to eradicate chronic homelessness. (Fausto Giovanny Pinto | NJ Advance Media for NJ.com)

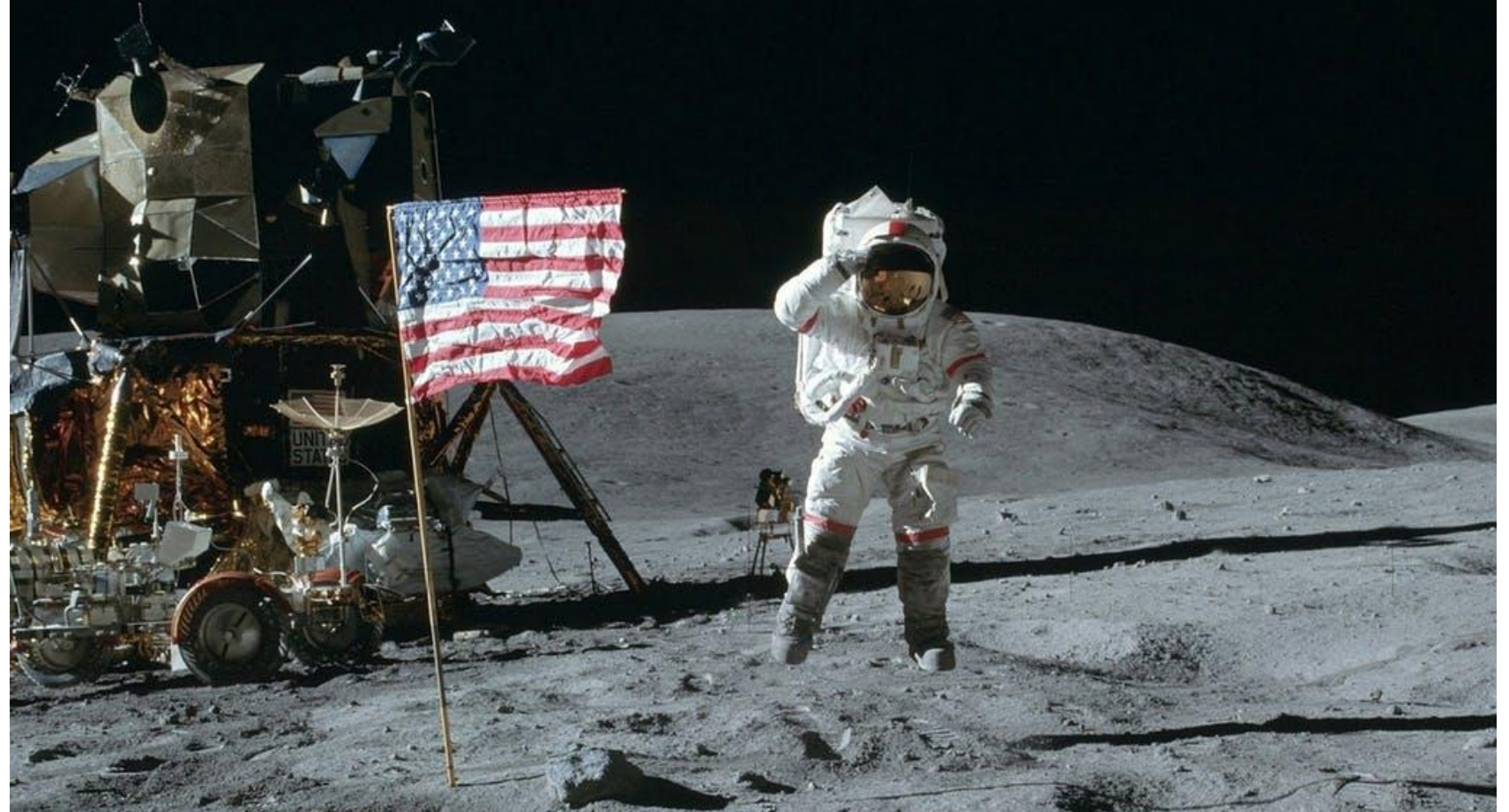
Simple Problems



Source: Community Solutions, US, 2017



Complicated Problems



Complex Problems



Homelessness a Wicked Problem



We're trying to understand this problem...

Problems	Approach
Simple Complicated	Initiatives / Programs
Complex Wicked	Systems Change / Collective Impact



We're trying to solve this problem in Adelaide's inner city...

This project will engage with all people sleeping on the streets of the Adelaide inner city area.

A person is recognised as a rough sleeper if they are living in a:

- STREET/PARK/OUT IN THE OPEN
- IMPROVISED BUILDING OR DWELLING
- TENT
- BOAT
- MOTOR VEHICLE
- CABIN

Coverage

The City of Adelaide boundaries, which includes the Central Business District, North Adelaide and the parklands.

- Central Business District
- North Adelaide
- Parklands

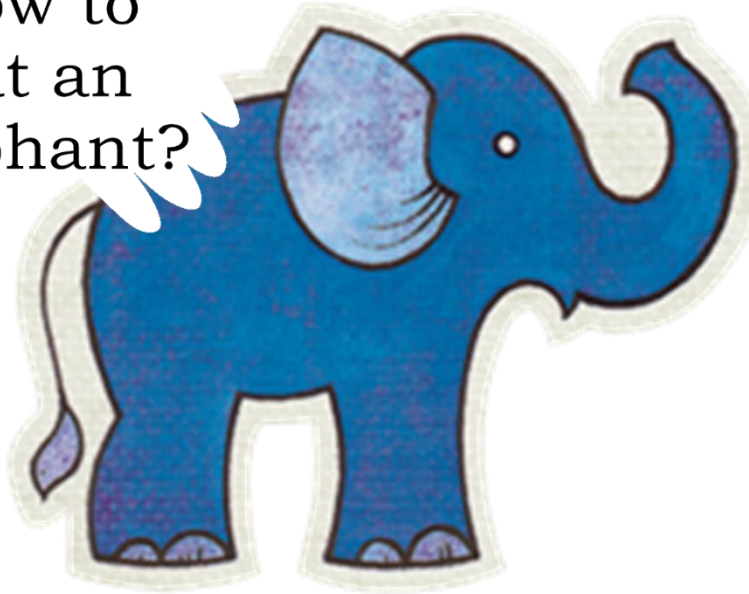


Source: DHS

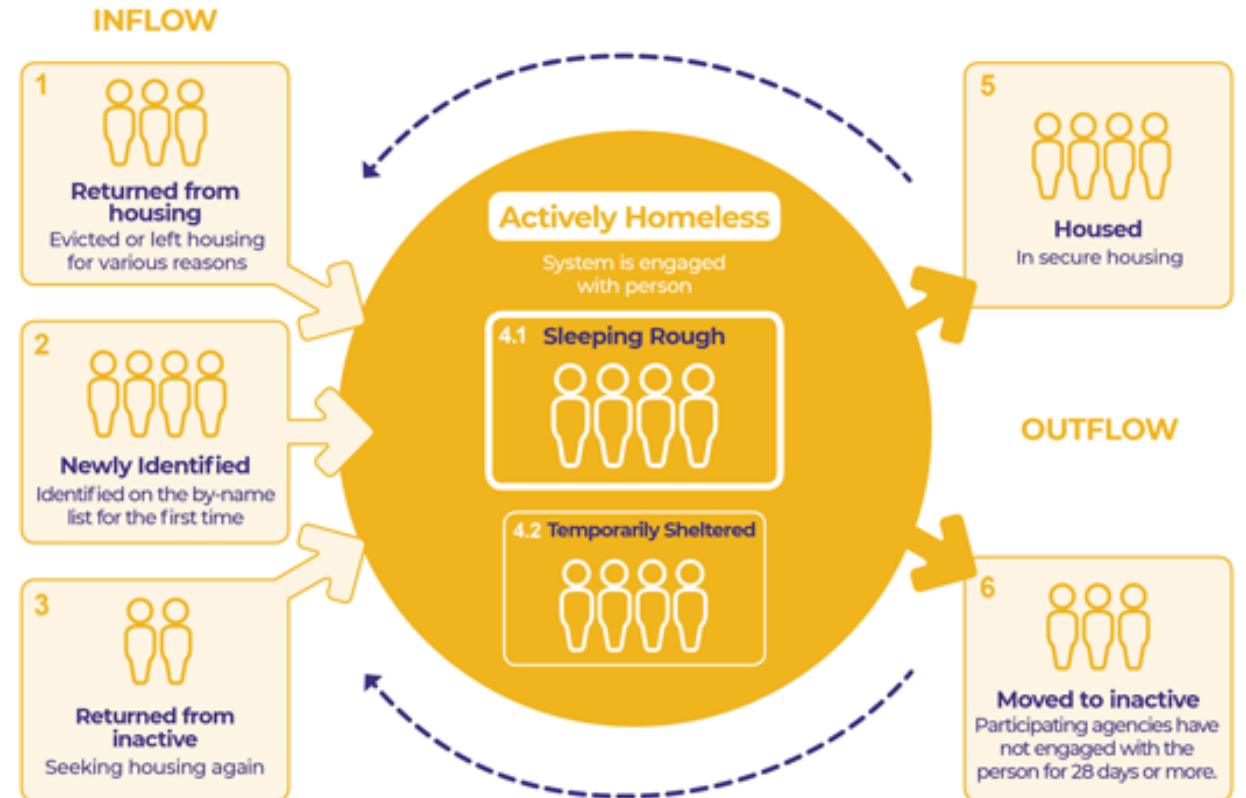
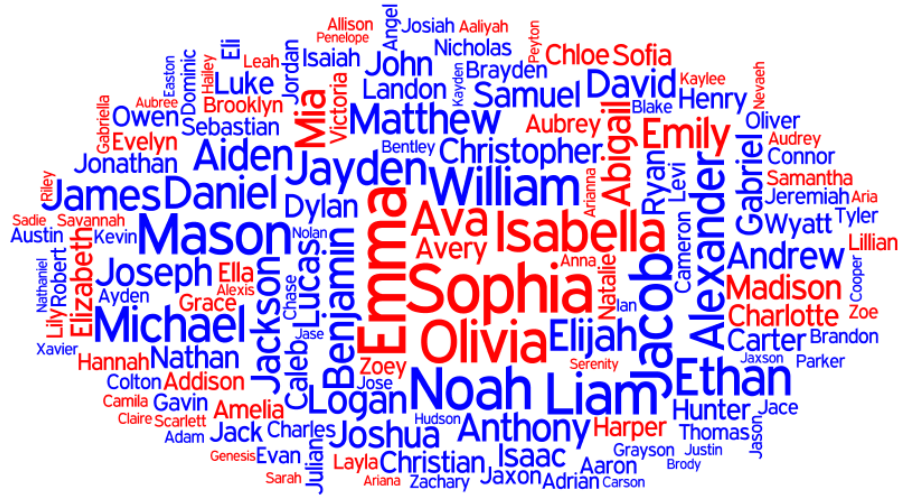


We're trying to break up this problem...

Do you know
how to
eat an
elephant?



Achievements...



Connections Week...



2018



2019



Presented by



Principal Partner



University Partners



Government Partners



Major Partners



Supporting Partners



ADELAIDE ZERO PROJECT GOVERNANCE STRUCTURE – PHASE THREE

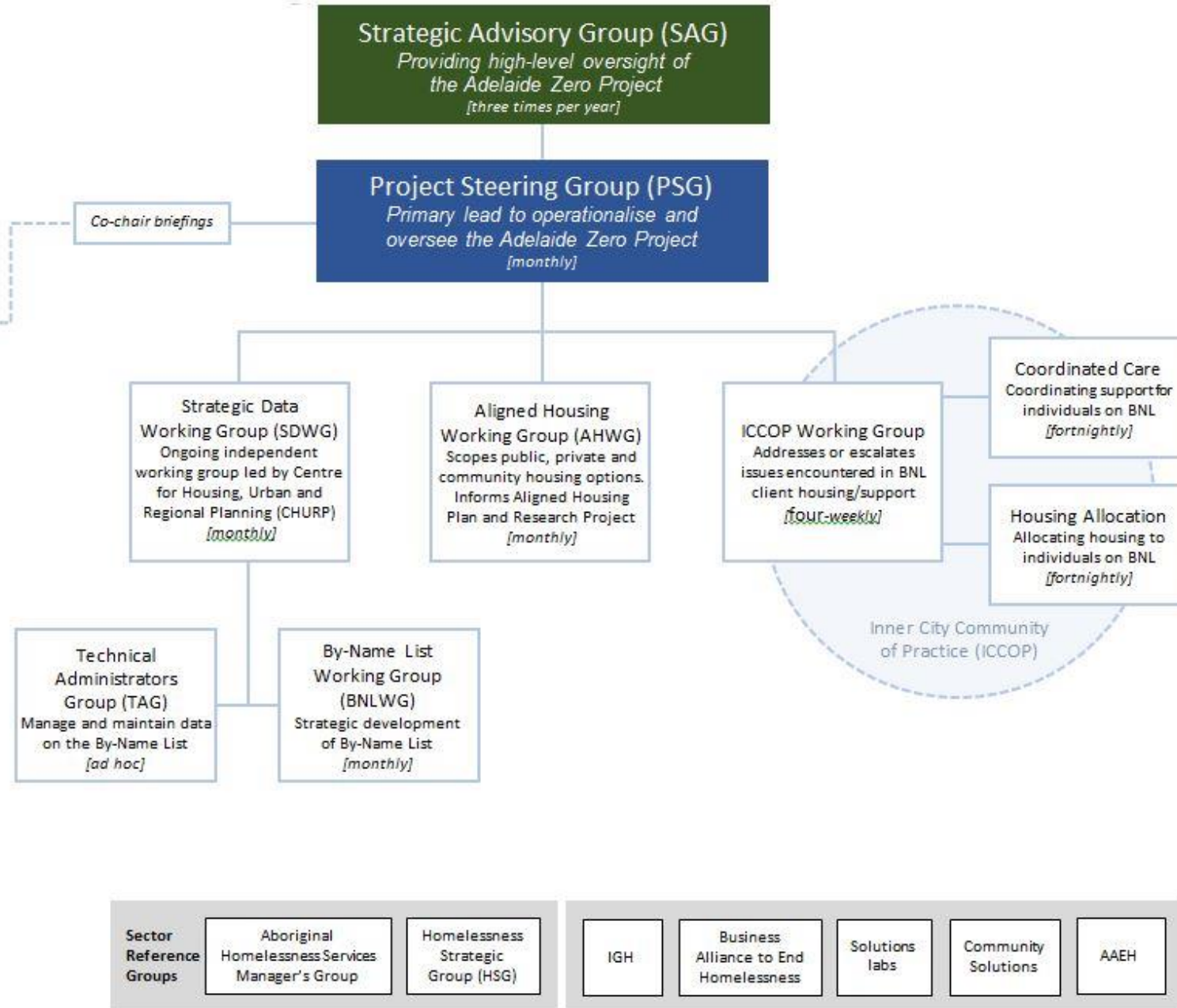
CO-ORDINATION AND SUPPORT



Backbone organisation for the Adelaide Zero Project



Providing support and advice through policy and resources for public homelessness services





- ## Common Progress Measures

- ## Mutually Reinforcing Activities

- ## Communications

- ## Backbone Organization

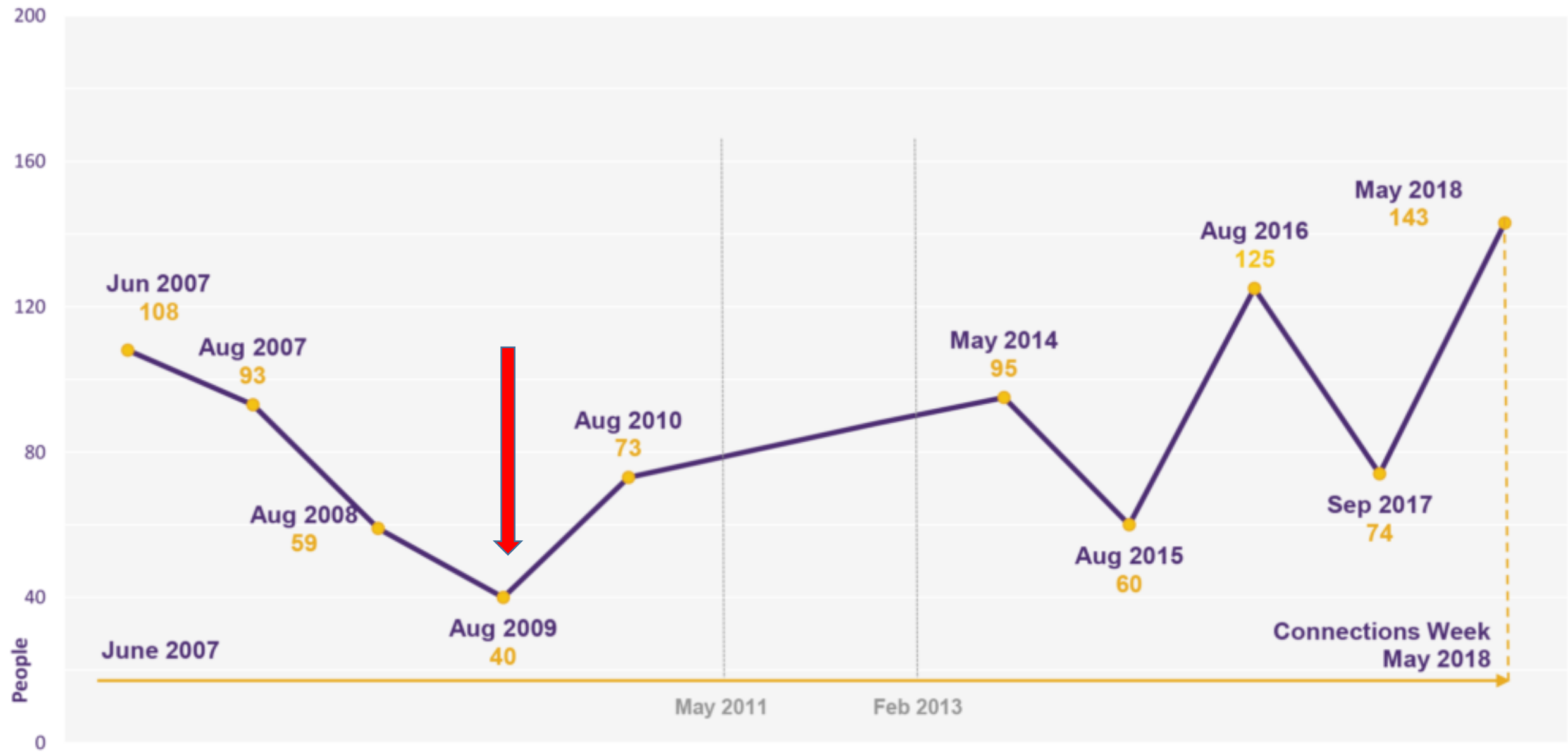
- Takes on the role of managing collaboration

The biggest achievement - 183 housing placements!



Rough Sleeping in Adelaide

Number of people sleeping rough in Adelaide's inner city



Not just a housing issue...



76%

**Physical Health
Issues**



82%

**Mental Health
Issues**



79%

**Substance use
Issues**



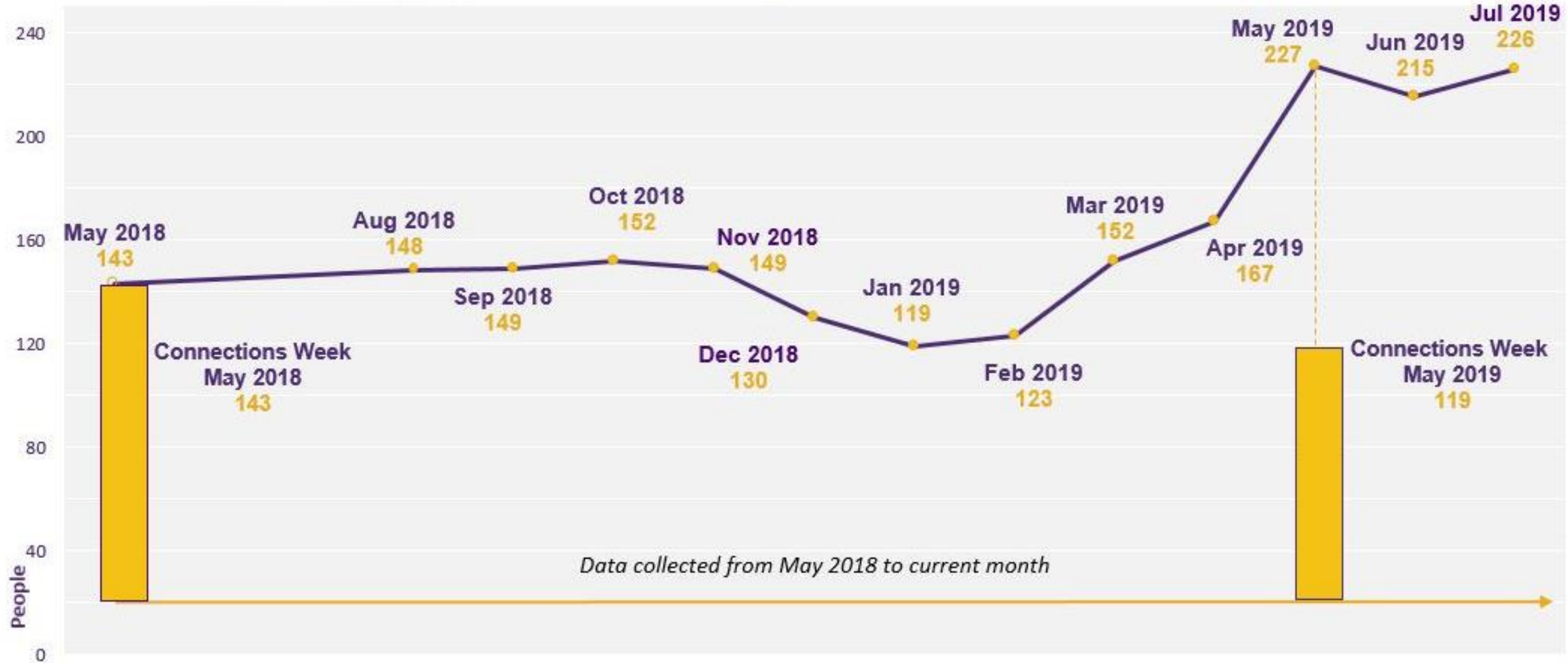
54%

**With a combination of
physical, mental and
substance use issues**

*as at July 2019

What we found...

Number of people sleeping rough in Adelaide's inner city



27%

had been sleeping rough
for less than 1 year *

54%

had been sleeping rough
for more than 2 years *

59%

people reporting they **lack daily
meaningful activity** while sleeping
rough

32.6%

of rough
sleepers were



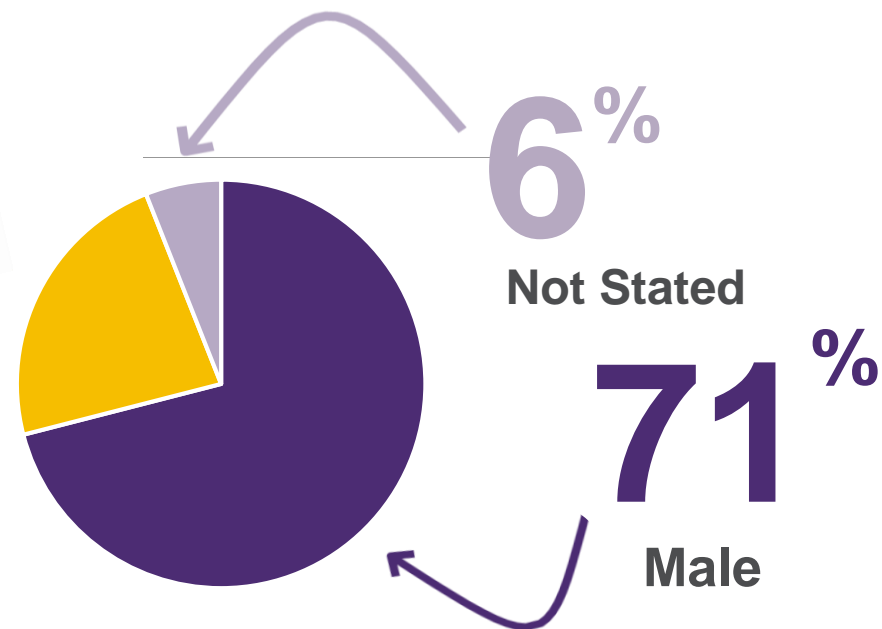
ABORIGINAL and/or
TORRES STRAIT ISLANDER

despite being only 2% of the South Australian population

Gender

23%

Female



Prevention is half the challenge...

- Since connections week last year we have
 - housed 183 people
 - 384 new people have been identified at sleeping rough



**RAISE
THE RATE**



Next Steps ...



Next Steps – A National Campaign...

aaeh
australian alliance
to end homelessness

Campaign principles



Be housing-
focused



Know everyone
by name



Track our
progress



Improve local
systems

advance to zero

**local communities
ending homelessness**



