



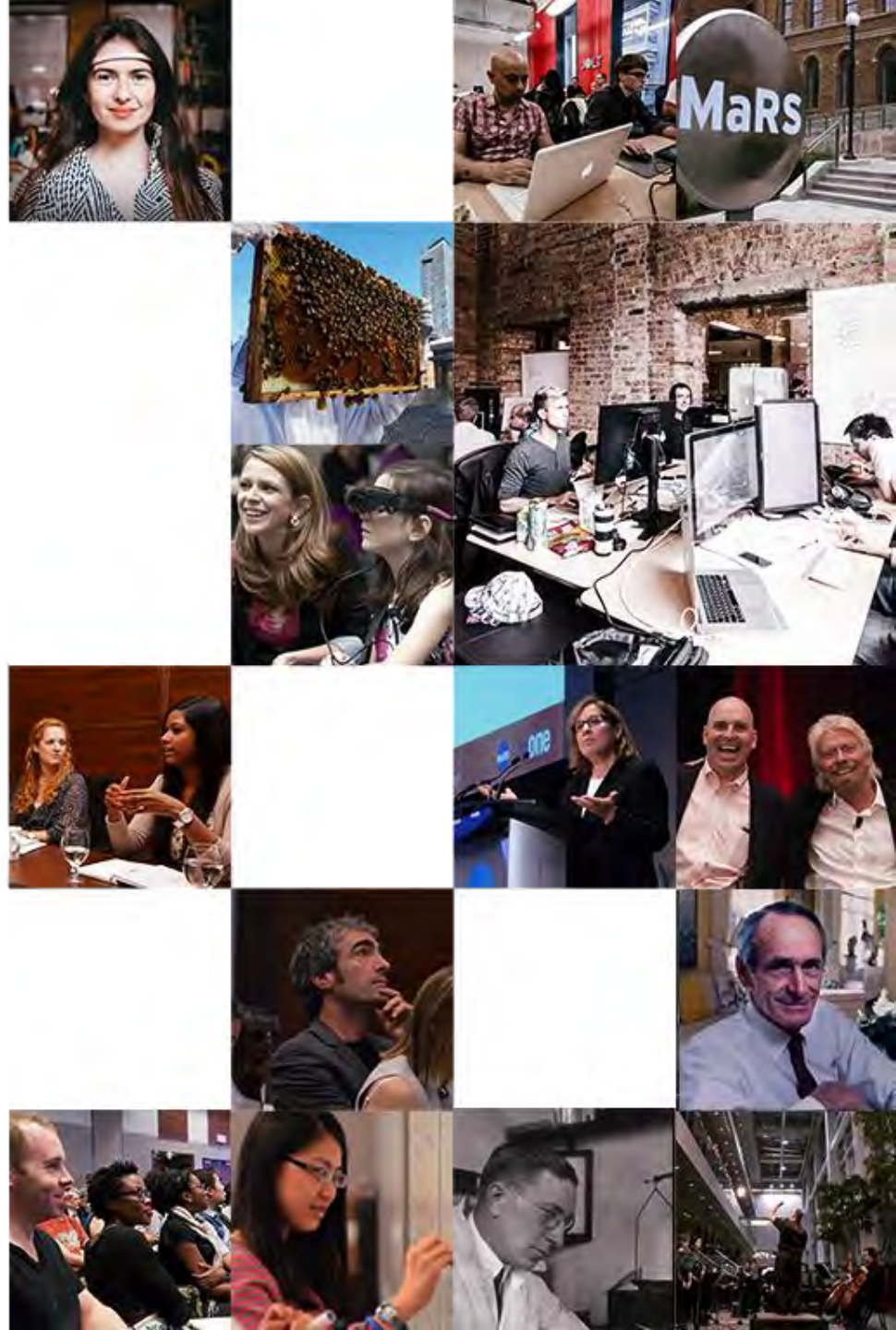
Social Capital Residency

IPAA SHOWCASE

ALLYSON HEWITT
DON DUNSTAN FOUNDATION
THINKER IN RESIDENCE

SEPTEMBER 2017

Visit us at marsdd.com





Greetings from MaRS

Map the Social Capital Ecosystem



Demonstrate the Business Case/ Engage Corporates





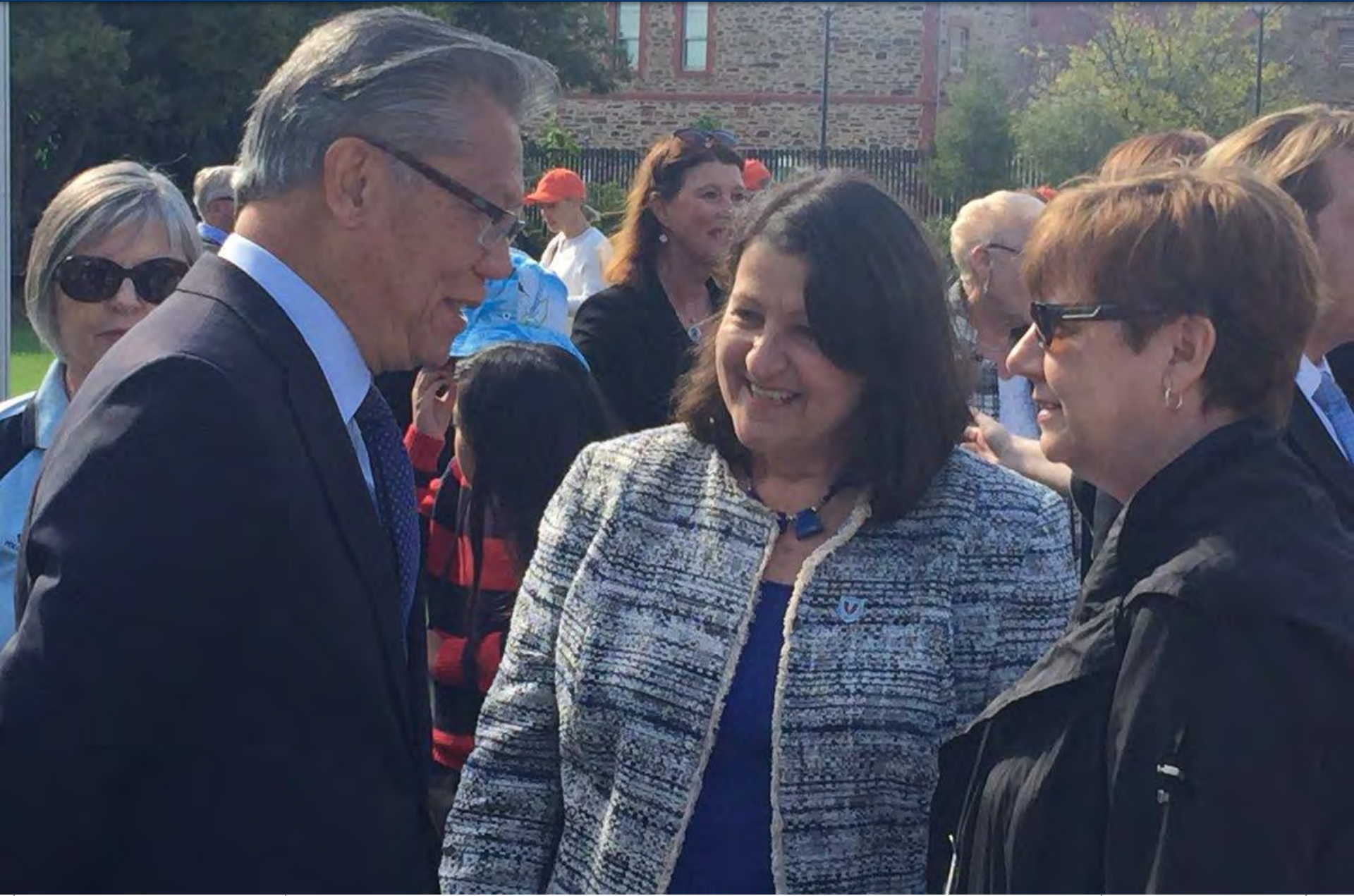
Support the Efforts of Social Capital



Identify and Support Intermediaries



Share Stories of Success





Realize Opportunities from the NDIS

Leverage and Support Post Secondary Institutions in Growing the Social Economy



Build Blended Value Start Ups

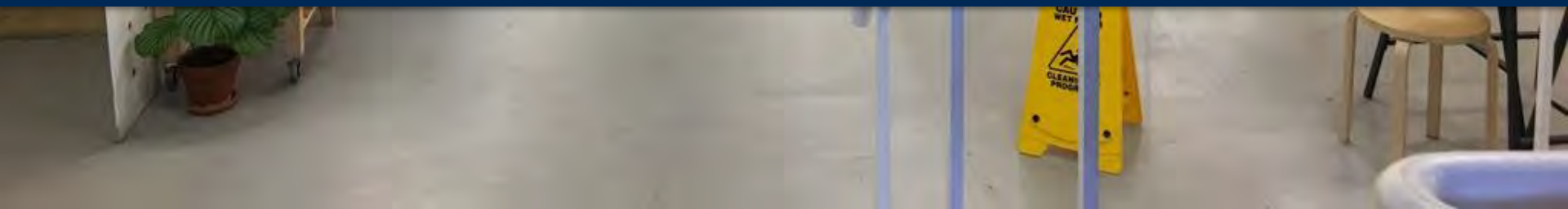




Support Public Sector Innovation



Create Spaces for Experimentation





Create Receptor Capacity for Innovations





Demonstrate Impact

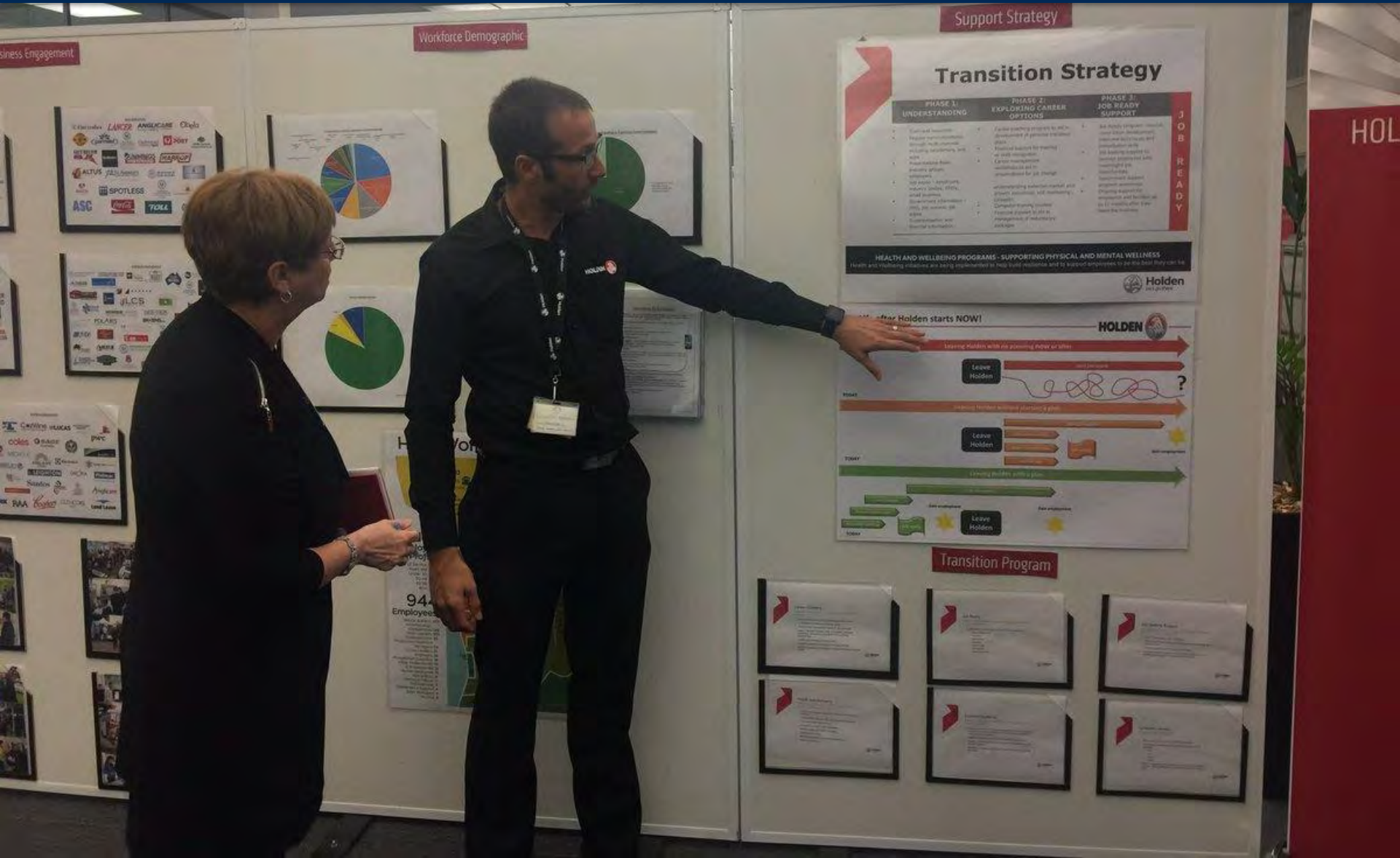
Build Social Capital Talent Harness Technology





Pick a Unifying Brand for South Australia
Exploring what it means to be a "test city"

Grow the Entrepreneurial Ecosystem Including Creating Access to Capital



Workforce Demographic



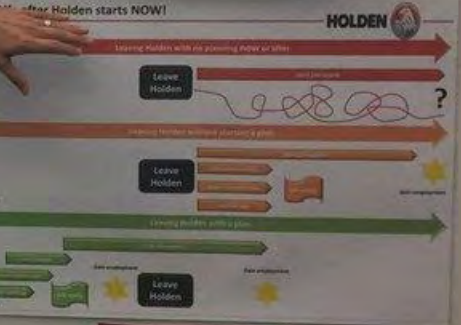
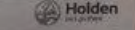
Support Strategy

Transition Strategy

PHASE 1: UNDERSTANDING	PHASE 2: EXPLORING CAREER OPTIONS	PHASE 3: JOB READY SUPPORT
<ul style="list-style-type: none"> Conduct business triage Map business structure through multiple channels including stakeholders, SWOT Identify business opportunities Identify clients, partners, suppliers, industry contacts, etc. Identify business strengths, weaknesses, etc. Identify business opportunities, etc. Identify business strengths, weaknesses, etc. Identify business strengths, weaknesses, etc. 	<ul style="list-style-type: none"> Establish a program to support business growth and expansion Develop business plan and strategy Identify business opportunities Identify business strengths, weaknesses, etc. Identify business strengths, weaknesses, etc. 	<ul style="list-style-type: none"> Set up a program to support business growth and expansion Develop business plan and strategy Identify business opportunities Identify business strengths, weaknesses, etc. Identify business strengths, weaknesses, etc.

JOB READY

HEALTH AND WELLBEING PROGRAMS - SUPPORTING PHYSICAL AND MENTAL WELLNESS
Health and Wellbeing programs are being implemented to help build resilience and to support employees to do this and they can be



Transition Program

94 Employees

Create and Act On a Bold Vision for the Old RAH





Old ideas can sometimes use new buildings. New ideas must use old buildings.

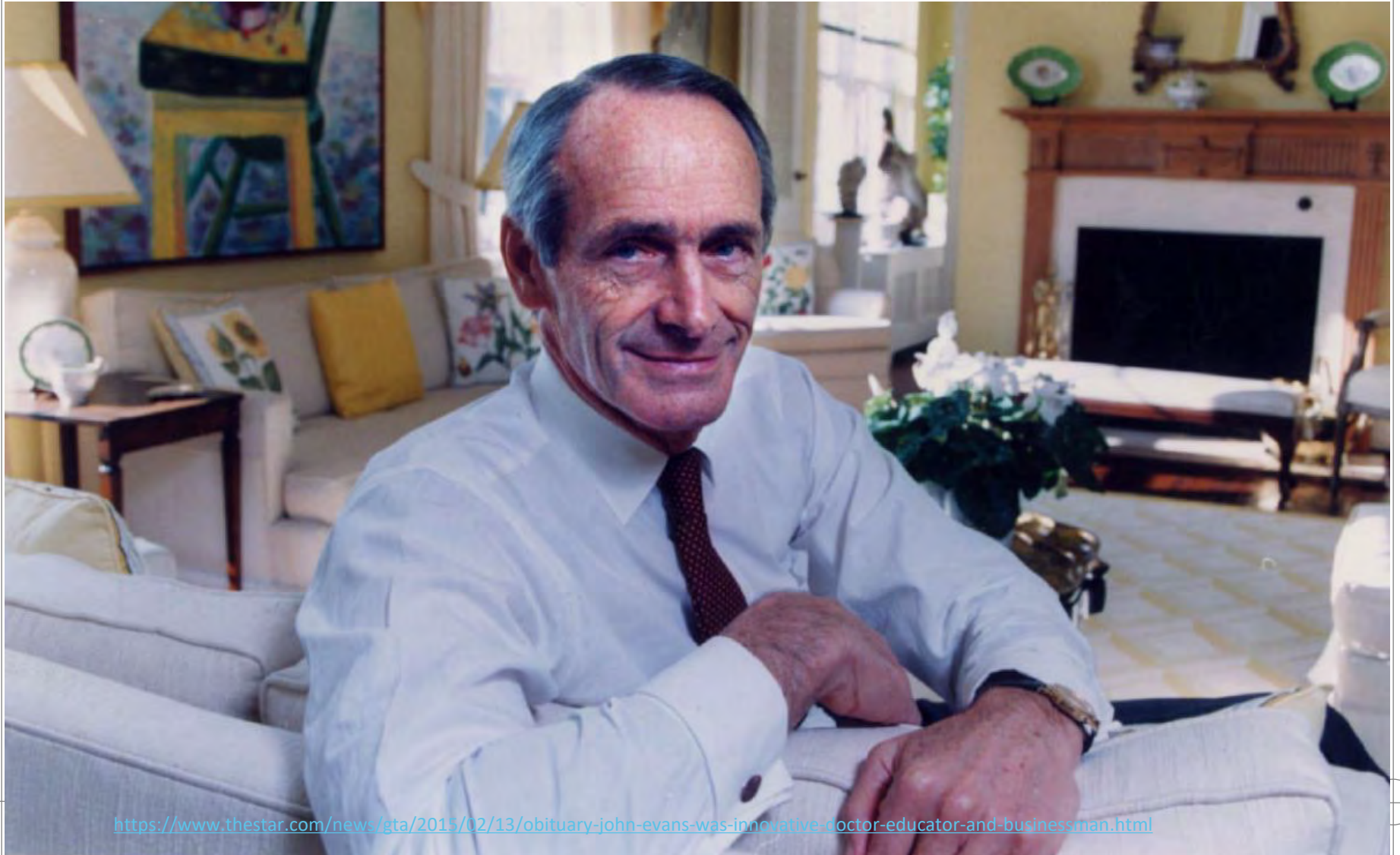
— *Jane Jacobs* —

AZ QUOTES

<http://www.azquotes.com/quote/524877>

“It’s amazing what you can get accomplished when you don’t care who gets the credit”

– Dr. John Evans, co-founder of MaRS



<https://www.thestar.com/news/gta/2015/02/13/obituary-john-evans-was-innovative-doctor-educator-and-businessman.html>

As a chemist, Ilse is excited to see what comes from putting unusual elements together to form new combinations



MaRS Discovery District's CEO Ilse Treurnicht is photographed in Toronto, Thursday October 8/2015.
KEVIN VAN PAASSEN THE GLOBE AND MAIL



Justin Trudeau ✓

@JustinTrudeau

Following



Inclusive innovation in action: Microsoft projects making the world more accessible for those with disabilities.



1:41 PM - 17 Jun 2016



Our Future Matters



marsdd.com